

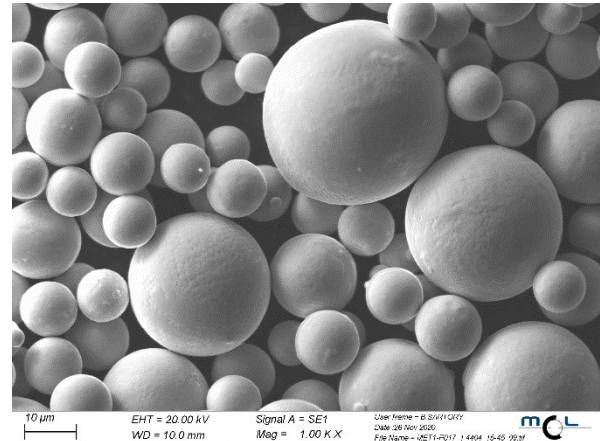
Stainless Steel: MET 1.4404

Alternative designation: 316L

Description and general material properties

MET 316L is a stainless steel with a low carbon content and good corrosion resistance. It is commonly used in chemical and petrochemical industry, in food processing, pharmaceutical equipment, medical devices, in potable water, wastewater treatment, in marine applications and architectural applications near the seashore or in urban areas.

Powder characteristics



Chemical composition		
Element	Min [wt%]	Max [wt%]
Cr	16,5	18,0
Ni	10,0	15,0
Mo	2,0	2,5
Mn		2,0
Si		0,75
Cu		0,5
Others total		0,2
Fe	Balance	Balance

Physical properties		
Properties*	Min	Max
Flow rate [s/50g]		12
Bulk density [g/cm ³]	4,5	

*exemplary values for PSD 15 - 45 µm