

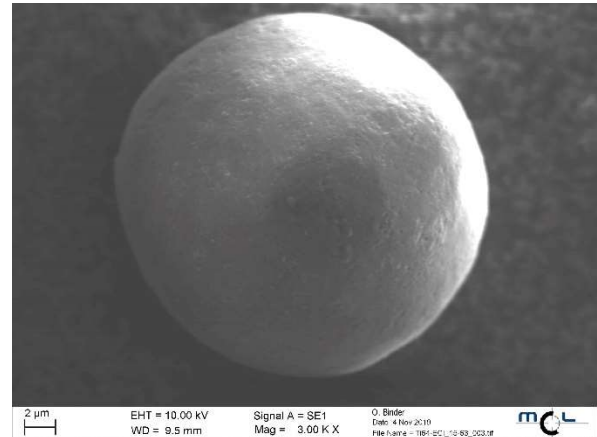
# Titanium alloy: MET Ti Grade 23

## Alternative designation: Ti6Al4V ELI/ Ti64-ELI

### Description and general material properties

MET Ti6AL4V-ELI, or Grade 23 titanium, is the higher purity version of MET Ti6Al4V with a very good biocompatibility. It's the top choice for any sort of situation where a combination of high strength, light weight, good corrosion resistance and high toughness are required. It has a superior damage tolerance to other alloys.

These benefits make MET Ti6AL4V-ELI the most requested titanium grade for dental and medical applications. Due to its biocompatibility, good fatigue strength and low young's modulus, it can be used in biomedical applications or other surgical procedures such as implantable components.



### Powder characteristics

Chemical composition		
Element	Min [wt%]	Max [wt%]
Al	5,5	6,5
V	3,5	4,5
Fe		0,25
O		0,13
C		0,08
N		0,05
Ti	Balance	Balance

#### Important note:

These goods are subject to the European or Austrian export license requirement when exported from the EU. Please note that a licensing requirement may also result from the final destination and the intended use of the goods (dual-use)

This powder has not been developed, tested or certified as a medical device according to Directive 93/42/EEC (MDD) or Regulation (EU) 2017/745 (MDR) and is not intended to be used as a medical device, in particular for the purposes specified in Art. 2 No. 1 MDR. Insofar as you intend to use the powder as raw material for the manufacture of pharmaceutical products or medical devices (e.g. as raw material which as a material must meet the requirements of Annex 1, Chapter II MDR), the responsibility and liability for all analyses, tests, evaluations, procedures, risk assessments, conformity assessments, approval and certification procedures as well as for all other official and regulatory measures required for this purpose shall lie solely with you both with regard to the pharmaceutical product and/or medical device manufactured by you and with regard to the properties, suitability, testing, evaluation, risk assessment, other requirements for use of the powder as raw material.

In this respect, the limitations of liability pursuant to our General Terms and Conditions and the system sales or material contracts shall apply.

**Metalpine GmbH**, Kratkystr. 2, 8020 Graz, Austria  
M: +43 681 10756454 E: office@metalpine.at

[metalpine.at](http://metalpine.at)

The information given in this document shall be in no event regarded as guarantee of conditions or characteristic. We always recommend the user to test our products on his own responsibility. Extensive research is ongoing, which is why Metalpine reserves the right to change the specification, information and data without notice.